

Louisiana Tech University



# BREEZE BULLETIN

Office of University Research (<http://research.latech.edu>)

*I never expect to lose. Even when I'm the underdog, I still prepare a victory speech.*

H. Jackson Brown Jr.

(1940-, American author, "Life's Little Instruction Book" series)

## TABLE OF CONTENTS

New Grants Awarded . . . . . 3  
 Proposals Submitted . . . . . 4-7  
 Additional Grant Funding for Existing Awards . . . . . 7  
 Funding Announcements . . . . . 8

## 2014-15 TECH FRINGE RATES

The 2014-15 Tech Fringe Rates have not yet been posted. Please use last year's rates until further notice:

Faculty/Unclassified/Post Doc: 48.08%  
 Civil Service: 57.08%  
 Temporary/Part-time: 9.81%  
 DROP: 20.08%

Click the following link to download a pdf chart: [http://research.latech.edu/files/documents/2014-15\\_fringe\\_rates.pdf](http://research.latech.edu/files/documents/2014-15_fringe_rates.pdf).

## IN-HOUSE WORKSHOPS

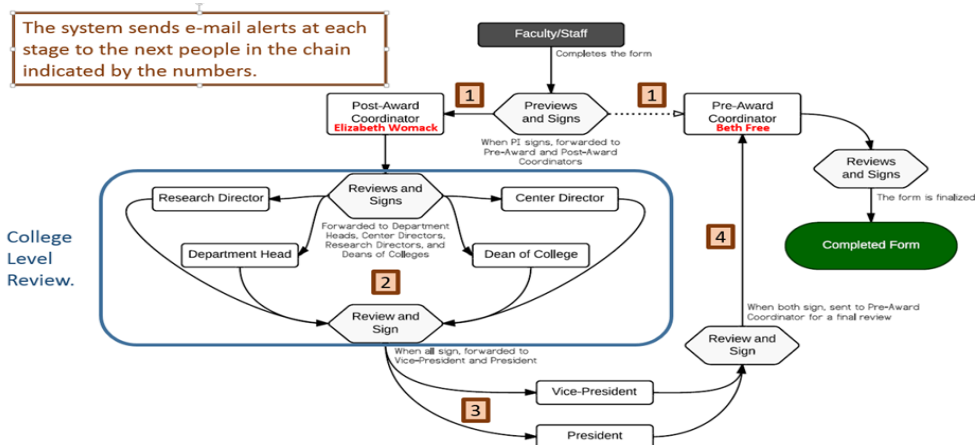
For a full list and descriptions of in-house workshops, go to [http://research.latech.edu/resources/training\\_workshops/latech\\_workshops](http://research.latech.edu/resources/training_workshops/latech_workshops).

- Grants.gov: November 19, 2-3pm, WT1535
- NSF Fastlane: January 13, 2-3pm, CIT Lab, 10th Floor Prescott Library

## New Online Proposal Routing System

In Fall 2014, the Office of University Research proudly unveiled a web-based system for internal approvals of proposals. The system had been under development for about a year by Mr. Sangam Mulmi, who earned his BS in Computer Science from Louisiana Tech in Spring 2013 and is now continuing at LA Tech as a graduate student in Computer Science.

Mr. Mulmi was able to adapt some of the tools he developed to support Louisiana Tech's ACTT program for this system. The routing system was piloted during the summer and made available to all investigators in the fall. (Cont. on page 2)



## What has the Research & Development Office Been Up To Lately?

In an endeavor to provide assistance to faculty and staff in research-related efforts, Dr. Napper, Vice President for Research & Development, has recently established a Research Growth Team and two IRB (HUC) Improvement Teams. The Research Growth Team's purpose is to identify opportunities and strategies for growth in collaboration, funding, and resources in support of sponsored research. (Cont. on page 2)



**–New Online Proposal Routing System (Continued from page 1)**

All investigators are encouraged to use this system instead of the traditional paper-based system as it simplifies streamlining and records the approval process using digital electronic signatures. Future plans in 2014-15 are to design similar electronic forms for travel authorizations and appointment request forms—stay tuned!

**–What has the Research & Development Office Been Up To Lately? (Continued from page 1)**

With reference to the teams (subcommittees of the Human Use Committee) for IRB (HUC) improvement review, two teams have been established. One team, named the Data Security Committee, has the charges of reviewing policy, communications and practice relative to human subject data security at Louisiana Tech, and recommend improvements. A second team, named the Process Improvement Team, has the charges of reviewing best practices and National Science Board recommendations, evaluate Louisiana Tech IRB for completeness in policy and communication, and recommend additions and changes.

Dr. Napper has also begun to schedule “Research Collaborative” lunch meetings with the goal of having groups consisting of faculty from each college be introduced to each other and provide them an opportunity to discuss a topic of common interest. The anticipated outcomes would be the identification of potential collaborative research projects and topics, and discussion of events/activities/funding in the topical areas. The current group topics consist of Improving Health Outcomes for Children (first group to recently meet and have lunch), Analytics (using data for decision making, wide applications, similar tools), Problem-based Learning, Autism and Behavioral Disorders, Sports Performance, Diagnostic Devices and Systems, Public Policy, STEM Education Research, and Optical Systems.

Dr. Napper has also engaged Mrs. Lindsey Keith Vincent to assist in the effective use of Academic Analytics, an LLC that provides custom business intelligence data and solutions for research universities, to evaluate research productivity and review opportunities for improvement strategies. This project will assist Mrs. Vincent in completing her doctoral degree requirements she is currently pursuing in the College of Education at Louisiana Tech.



## NEW GRANTS AWARDED

PI/Co-PI	Title	Funding Agency	\$ Awarded
Mike Shipp	<i>Comprehensive Center for Rehabilitation Technology (CCRT)</i>	La. Rehabilitation Services	629,859
Sheryl Shoemaker	<i>Increasing Diversity in Doctoral Populations at Louisiana Tech University 2014-2018</i>	BoR	190,000
James Palmer	<i>Superior Grad Fellows Supporting Five Centers of Excellence in Engineering 2014-2017</i>	BoR	300,000
Arun Jaganathan	<i>A Novel Magnetostriction Based Sensing Technology for Rapid Condition Assessment of Bridge Decks</i>	LTRC/TIRE	30,000
Lindsey Vincent	<i>Project A-LINE, Ouachita Parish MSP</i>	US Dept. of Edu/ BESE	25,139
Guy Carwile	<i>HABS Drawing: James Muslow House</i>	National Park Service/State of La.	7,500
Donna Hood	<i>Carl Perkins Basic Grant</i>	US Dept. of Edu/ Carl Perkins	12,000
K.Kimbell-Lopez	<i>Building Sustainability: Powerful Instruction Through Interactive Read Alouds, Literacy Stations, and Workshop Model (Year Two-Continuation)</i>	US Dept. of Edu/ LaSIP	30,018
Libby Manning	<i>Powerful Instruction Through Interactive Read Alouds &amp; Workshop</i>	US Dept. of Edu/ LaSIP	72,518
Don Schillinger	<i>STEAM Power</i>	US Dept. of Edu/ LaSIP	67,353
Bobby Dowling	<i>Trail to Hideaway Park</i>	L RTP	74,142
<b>July 2014</b>			<b>Total: 1,438,529</b>
Erica Murray	<i>Microstructural and Electrical Characterization of Novel Porous ZrO<sub>2</sub>-based NO<sub>x</sub> Sensors</i>	NSF	200,000
Henry Cardenas	<i>Electrokinetic Durability Enhancement of Southern Pine</i>	Ouachita Biomass, Inc.	9,3969
Arun Jaganathan	<i>A Novel Sensor Concept for Structural Health Monitoring of Rotating Machines</i>	BoR	42,553
Mary Moore	<i>Sustained Release of Minerals Using Degradable Hydrogels for the Repair of Bone Density/LURA: LUKE</i>	NASA/LaSPACE	6,000
Rastko Semic	<i>Dynamic Hand Gesture Recognition System</i>	NASA/LaSPACE	5,000
Arden Moore	<i>Nanostructured Surface Modifications for Enhanced Phase Change Heat Transfer</i>	NASA/LaSPACE	6,000
Jamie Newman	<i>The Role of Mediator in Regulating the State of Mesenchymal Stem Cells</i>	BoR/LSU/LBRN	19,000
<b>August 2014</b>			<b>Total: 287,952</b>
Jamie Newman	<i>Louisiana Tech Seminar Series on Science &amp; Society</i>	Lincoln Health Foundation	2,121
Mark Gibson	<i>McIntire-Stennis Cooperative Forestry Research Program - 2014</i>	US Dept. of Ag.	245,757
Chester Wilson	<i>Nanomanufactured Catalyst for the Production of Hydrogen Via Solar Thermal Gas Splitting</i>	IC	240,000
Julie Rutledge	<i>WISE: Together, We Inspire Smart Eating</i>	Lincoln Health Foundation	104,187
Julie Rutledge	<i>Bulldog Book Club: Increasing Lincoln Parish Preschoolers' Access to Books in the Home</i>	Lincoln Health Foundation	71,000
Bogdan Strimbu	<i>Dale Bumpers White River Nwr Continuous Forest Inventory Data Analysis</i>	US Dept. of Wildlife	15,000
Tommy Grafton	<i>Project Northland</i>	DHH/NHSD	77,850
Jamie Newman	<i>Designing Biomimetic Hydrogels for Generating Cardiomyocytes</i>	NASA/LaSPACE	5,000
Pedro Derosa	<i>Travel Funds for Mr. Divya Elumalai</i>	BoR	500
Thomas Bishop	<i>Planning Grant for Multi-Disciplinary Multi-National Studies of Mononucleosome Stability</i>	BoR/NSF	3,000
<b>September 2014</b>			<b>Total: 764,415</b>
			<b>YTD Total 3,662,143</b>

## PROPOSALS SUBMITTED

* FILE #	PI	Co-PI 's	TITLE	AGENCY	\$ Requested
15-001	Newman, Jamie		Louisiana Tech Seminar Series on Science & Society	Lincoln Health Foundation	2,121
15-002	Murray, Teresa		CAREER: Creating Living Labs for Longitudinal Studies of Neurogenesis	NSF	500,000
15-003	Sherer, Eric	Cahoy, Dexter	Receipt of Colorectal Cancer Surveillance Care and Survival	NIH	132,231
15-004	Newman, Jamie		Cardiomyocyte Generation for Cardiac Muscle Repair	LaSPACE/MRS	5,000
15-005	Sherer, Eric		CAREER: Genetic Algorithms for Pharmacokinetic Model Building	NSF	496,429
15-006	Moore, Mary		Environmentally Responsive Drug Delivery Microparticles for Oral Delivery of Sodium, Nitrite	LaSPACE/MRS	5,000
15-007	Bishop, Thomas		Planning Grant for Multi-Disciplinary Multi-National Studies of Mononucleosome Stability	BoR	3,000
15-008	Atkison, Travis		CAREER: High Confident Asymmetric Detection of Intrusions (HADIN)	NSF	488,170
15-009	Orr, Marisa		CAREER: Student-and-Curriculum-Specific Paths to Success through Self-Regulation	NSF	452,537
15-010	Tom Bishop		Toward On Demand Comparative Genomics of Mononucleosomes	XSEDE: Extreme Science and Engineering Discovery Environment	0
15-011	Dua, Sumeet	Napper, Stan	Center of Excellence in Cyber Security at Grambling State University	DOD	950,000
15-012	Dua, Sumeet	Chowriappa, Pradeep	Louisiana Biomedical Research Network	LSU/NIH	283,465
15-013	Allouche, Erez	Montez, Carlos	Solidification of Potential of Brine & Impacted CCPS Using Geopolymerization Technology	Southern Co.	27,500
15-014	Ramachandran, Ramu		RII Track-1: Consortium for Innovation in Manufacturing and Materials	BoR/EPSCoR	4,281,382
15-015	Chowriappa, Pradeep	Dua, Sumeet	Real-time Data Driven Fundus Image Quality Assessment Tool for Diabetic Retinopathy	Louisiana Clinical & Translational Science Center	50,000
15-016	Slam, Shaurav, Iseley, Tom	Iseley/Allouche	Experimental Evaluation of InfitPipe™ – Mechanical Performance and Design Considerations - Phase II	PipeMedic	128,710
15-017	Murray, Teresa	Arumugam/ Siddiqui	Development of Ultrananocrystalline Diamond Voltammetry Electrodes for In Vitro Neurochemical Monitoring	NIH	84,956
15-018	Cardenas, Henry		Electrokinetic Durability Enhancement of Southern Pine	Ouachita Bio-mass, Inc.	9,399
15-019	Liu, Pei		An Importance-Performance Analysis of Attributes Affecting Customer Satisfaction in the Restaurants: Employees vs. Customers Perceptions	Foodservice Systems Management Education Council	2,000
15-020	Weiss, Leland	Lvov, Yuri	AUTONOMOUS SENSOR PLATFORM FOR DEFENSE AND ENVIRONMENTAL APPLICATION	NSF	0
15-021	Moore, Arden		Three Dimensional Hierarchical Hexagonal Boron Nitride Nanomaterials	AFOSR	360,000

(\*Missing File #'s denote withdrawn proposals)

## PROPOSALS SUBMITTED (CONT'D FROM PAGE 4 . . .)

* FILE #	PI	Co-PI 's	TITLE	AGENCY	\$
15-022	Moore, Arden		Coupled Electrothermal Transport in Nanowire Networks for Flexible and Transparent Electronics Applications	BoR/RCS	147,038
15-023	Bell, Edward		Rehabilitation Long-Term Training	US Dept. of Education	750,000
15-024	Hollins, Bryant		Beta-amyloid aggregation is influenced by protein-centered radical formation	BoR/RCS	165,000
15-025	Kanno, Jinko		New Approach towards Seymour's Conjecture on Hamilton Power Subgraphs	BoR/RCS	144,254
15-026	Kordal, Rich	Sherer/Cahoy	Discovery Process	NSF	299,183
15-027	Mills, David		REU Site: Translational Medicine: From Benchtop to Surgical Suite	NSF	442,414
15-028	Jones, Steven		REU Site: Research Experiences in Micro/ Nano Engineering	NSF	316,441
15-029	Murray, Erica		Electrical Characterization of HEGO Sensors	Ford Motor Company	15,000
15-030	Hollins, Bryant		Oxidized brain protein profiles as a marker for Alzheimer's progression	Alzheimer's Association	100,000
15-031	Menkulasi, Fatmir		Investigating the Fatigue Performance of Fiberglass Cross-Arms	CLECO Power, LLC	21,450
15-032	Tewari, Sanjay		Electrochemical Treatment of Arsenic and Other Toxic Metals With Carbon Aerogel for Affordable Drinking Water	BoR/RCS	110,000
15-033	Hindmarsh, Patrick	Lvov, Yuri	Environmental Safety of Clay Nanotubes in Water Purification Filters	BoR/RCS	166,756
15-034	Newman, Jamie		The Role of Mediator in Regulating Mesenchymal Stem Cell State	BoR/RCS	150,000
15-035	Tewari, Sanjay		Environmental Friendly Recycling of Lead-Acid Batteries	BoR/ITRS	0
15-036	Wasiuddin, N.		Characterization of Asphalt Binders Exposed to Extreme Temperatures Through Simple and Effective Test Methods	US DOT	221,108
15-037	Menkulasi, Fatmir		Development of a resilient and sustainable composite bridge system that accelerates construction	BoR/RCS	180,000
15-038	Weiss, Leland	Lvov, Yuri	Naturally Occurring Nano-Material use for Thermal Storage and Energy Savings	NSF	300,000
15-039	Derosa, Pedro		Travel Funds for Mr. Divya Elumalai	BoR	500
15-040	Wick, Collin		The Development of a Parameterization and Methodological Framework to Investigate Complex Aqueous Chemical Reaction	NSF	304,418
15-041	Moore, Mary		Evaluation of the Effects Size and Surface-area-to-volume Ratio has on Material Performance of Environmentally Responsive Micro- and nanoscale polymeric biomaterials	BoR/RCS	150,000
15-042	Grafton, Tommy		Project Northland	DHH /NHSD	77,850
15-043	Selmic, Rastko	Strimbu, Bogdan	Micro-Aerial Vehicles Formation Control and Data Analysis for Precise Agriculture and Forestry Applications	BoR/ITRS	239,619

(\*Missing File #'s denote withdrawn proposals)

(Cont'd on page 6)



## PROPOSALS SUBMITTED (CONT'D FROM PAGE 5 . . .)

*FILE #	PI	Co-PI 's	TITLE	AGENCY	\$
15-044	DeCoster, Mark		CELLDIPS: Cell Discovery Platforms for Commercial and Educational Applications	NSF	50,000
15-045	Arumugam, Prabhu		Remediation of Produced Water with High Efficiency On-site Generation of Mixed Oxidants Using Ultrananocrystalline Diamond Electrodes	BoR/ITRS	261,895
15-046	Hill, Jennifer		The Effects of Pesticides on Invertebrate Predator-prey Interactions in Marine and Freshwater Communities	BoR/RCS	151,451
15-047	Heiden, Kathleen		Body Image Perception or Reality: How do Relationships Affect Individual's Perceptions?	BoR/RCS	200,000
15-048	Wang, Shengnian		Manufacturing Foamed Mesoporous Carbon/Silicon Composite Nanofibers for Energy Storage	NSF	307,180
15-049	Carpenter, Jenna		Departmental Dialogues: Fostering Participatory Governance to Promote Gender Equity among STEM Faculty	NSF	191,622
15-050	Lvov, Yuri		EPA Student Fellowship/Joshua Tully	EPA	50,000
15-051	Atkison, Travis		MUTC Integrated SCADA Testbed (MISTB) Development	AFIT	1,148,038
15-052	Newman, Jamie		The Role of Mediator in Maintaining and Differentiating Human Mesenchymal Stem Cell State	LBRN	100,000
15-053	Alam, Shaurav	Isely, Tom	Development of High Strength Super Light Weight Concrete	Sabre Building Systems by CellXion	50,020
15-054	Hollins, Bryant		A microdevice for monitoring protein oxidation in Alzheimer's progression	LBRN	300,000
15-055	Giorno, Rebecca		Spore Outer Structures: Contribution to Germination Heterogeneity	LBRN	0
15-056	Mills, David		Nanoenhanced Hydrogels for Drug Delivery and Bone Regeneration	American Association of Anatomists	40,750
15-057	Dai, Weizhong		The Generation of Coherent Superpositions of Solitons and Vortices in Bose-Einstein Condensates	AFOSR	302,835
15-058	Wang, Shengnian		Preparation of Graphene/ Si Nanoweb Composite Electrode for High Performance Energy Storage Systems	LaSPACE/RAP	43,993
15-059	Newman, Jamie		Microtopographical Effects on Differentiation of Mouse Embryonic Stem Cells into Cardiomyocytes/Nehal Patel	Sigma XI	1,000
15-060	Newman, Jamie		The Role of Notch in Mesenchymal Stem Cells/Ngozi Ogbonnaya	Sigma XI	783
15-061	Newman, Jamie		The Role of Mediator in Regulating Mesenchymal Stem Cell State/Erik Beadle	Sigma XI	1,000
15-062	Kanno, Jinko		Book Thicknesses of Directed Graphs	NSA	48,079
15-063	Weiss, Leland	Moore, Arden	High Porosity Small-Scale Heat Exchangers for NASA Application	BoR/EPSCoR	54,403

(\*Missing File #'s denote withdrawn proposals)

(Cont'd on page 7)

## PROPOSALS SUBMITTED (CONT'D FROM PAGE 6 . . .)

*FILE #	PI	Co-PI 's	TITLE	AGENCY	\$
15-064	Wilson, Chester		RF Interrogation of Mobile Device Battery Circuits	CIC/AFRL	77,542
15-065	Atassi, Ahmad		The Making and History of the Earliest Muslim Biographical Dictionary: Ibn Sa'd's Kitab al-Tabaqat al-Kabir	BoR/ATLAS	31,336
15-066	Moore, Arden	Weiss, Leland	Hierarchical Hexagonal Boron Nitride Nanomaterials for Phase Change Thermal Energy Storage	BoR/EPSCoR/RAP	43,265
15-067	Wick, Collin		Development and Testing of Computational Tools for the Prediction & Understanding of Gas-Liquid Nucleation	NSF	63,722
15-068	Schuder, Veronica		Revision and Publication of "Between the Wolves and the Dogs"	BoR/ATLAS	16,814
15-069	Siddiqui, Shabnam		Detection of Magnetic Field With High Precision Using Quantum Sensor	BoR/EPSCoR/RAP	44,138
15-070	Alam, Shaurav	Iseley, Tom	Performance of Liner Subjected To Cyclic Pressure Changes at Tap Location at Macro and Micro Levels	Sanexen Environmental Services, Inc.	3,500
15-071	Alam, Shaurav	Iseley, Tom	SHRP II R-01 Modification #8 - Encouraging Innovation in Locating & Characterizing Utilities: SAULT Update and Servicer Hosting	SAULT	15,990
15-072	Montes, Carlos	Crews/Simicevic	Development & Evaluation of A Lunar-Regolith Based Construction Material Capable of Manufacture in a Vacuum Environment	BoR/EPSCoR/RAP	43,613
15-073	Wilson, Chester		Electromagnetic Pulse Shielding Development for the Intrepid Tiger II EW System Using Batch Manufactured Graphene Coatings	Army through C5	254,311
15-074	Derosa, Pedro		Monte Carlo Methods for Predicting Electrical Properties of CNT Composites Grant Proposal	Sigma XI	940
15-075	Radadia, Adarsh		Point-of-care Microelectronic Diagnostics For Early Phase Rickettsial Infections	LBRN	300,000
15-076	Newman, Jamie	McConnell, Rebecca	Fluorescence Imaging for Undergraduate Cell and Molecular Biology	BoR/ENH	115,559
15-077	Wells, Steven	Johnston/Simicevic	Parity Violating Electron Scattering and Nucleon Structure Studies at Jefferson Lab	NSF	431,163
15-078	Hood, Joanne		REAP Grant	US Dept. of Education	39,733

(\*Missing File #'s denote withdrawn proposals)

## ADDITIONAL GRANT FUNDING FOR EXISTING AWARDS

- E. Allouche, TENSILE TESTING OF POLYUREA SPECIMEN SUBJECTED TO 70C AND -40C TEMPERATURE, CenturyLink \$3,500;
- T. Grafton, PROJECT NORTHLAND - LINCOLN, UNION & JACKSON PARISHES, DHH/LaDHH \$166,752;
- L. Guice, CENTURYLINK TELECOM PROGRAM & PROFESSORSHIP, La. Dept. of Economic Development \$300,000;
- A. Chiu, LOUISIANA TECH UNIVERSITY-IDEA NETWORKS OF BIOMEDICAL RESEARCH EXCELLENCE, NIH/LSU \$104,022;
- P. Sethi, LOUISIANA TECH UNIVERSITY - IDEA NETWORKS OF BIOMEDICAL RESEARCH EXCELLENCE, NIH/LSU \$108,563;
- R. Giodano, ROLES OF THE SPORE COAT AND EXOSPORIUM IN SPORE GERMINATION AND DORMANCY, NIH/LSU \$47,000;
- A. Radadia, POINT OF CARE MICROELECTRONIC DIAGNOSTICS FOR EARLY PHASE RICKETTSIAL INFECTIONS, NIH/LSU \$60,000;
- S. Dua, LOUISIANA TECH UNIVERSITY-IDEA NETWORKS OF BIOMEDICAL RESEARCH EXCELLENCE, NIH/LSU \$33,654;
- S. Zivanovic, ON-CHIP SINGLE CELL OPTICAL TRANSFECTION, BoR/Pfund \$3,000.

\* \* \* \* \*

## FUNDING ANNOUNCEMENTS

**LSUHSC-S Cardiovascular Center Announces the continuation of the <sup>3</sup>Partners Across Campuses<sup>2</sup> Seed Program**

The Center for Cardiovascular Diseases and Sciences announces the continuation of their program to stimulate the growth of cardiovascular research beyond LSUHSC-S and foster collaboration across institutions in Northwest Louisiana. The Malcolm Feist <sup>3</sup>Partners Across Campuses<sup>2</sup> seed funding program will provide up to **4 awards of up to \$25,000 each for new interdisciplinary collaborative research projects**. A goal of the program is to build a foundation for future competitive extramural support in **cardiovascular or cerebrovascular disease**.

In collaboration with an LSUHSC-S faculty member, eligible institutions include LSU Shreveport, Louisiana Tech University, Centenary College, Northwestern State University, Grambling State University, Southern University and University of Louisiana at Monroe. A **letter of intent** to submit an application in response to the request for proposals (RFP) is **due February 6, 2015. Full proposals will be due April 3, 2015**. For questions about the program or the documents linked above, email [ccds@lsuhsc.edu](mailto:ccds@lsuhsc.edu) or call 318-675-6021. Control Click the following links to download the RFP and Application forms: [LSUHSC-S PAC rfp](#), [LSUHSC-S application](#).

**Gulf Coast Region Can Now Receive RESTORE Act Funding from U.S. Treasury**

10/14/2014

Projects Will Support Environmental and Economic Restoration

WASHINGTON – The U.S. Department of the Treasury today announced that eligible states and local governments can now apply for and receive grants to support the recovery of communities affected by the Deepwater Horizon oil spill. Interim Final Rules governing the funding became effective today, allowing the States of Alabama, Louisiana, Mississippi and Texas, along with 23 Florida Gulf Coast counties and 20 Louisiana coastal parishes, to receive funding under the Resources and Ecosystem Sustainability, Tourist Opportunities, and Revived Economies of the Gulf Coast States (RESTORE) Act.

“Treasury is working in support of the states and communities that were impacted by the Deepwater Horizon oil spill as they select environmental and economic renewal projects for funding,” said David Lebryk, Fiscal Assistant Secretary at the U.S. Department of the Treasury. “We look forward to continuing to work with our state, county and parish partners on the awarding of these grants.”

The Deepwater Horizon oil spill released millions of barrels of crude oil in the Gulf waters, and caused extensive damage to marine and wildlife habitats, fishing, and tourism. On July 6, 2012, President Obama signed the RESTORE Act into law, establishing a trust fund within Treasury with 80 percent of the civil penalties to be paid by parties responsible for the Deepwater Horizon oil spill under the Federal Water Pollution Control Act. To date, civil penalties and interest deposited into the trust fund exceed \$653 million.

Under an Interim Final Rule, published on August 15 and effective today, 35 percent of the Gulf Coast Restoration Trust Fund is divided equally among the five states for ecological and economic restoration. The States of Alabama, Louisiana, Mississippi, and Texas each receive a share for projects and programs they select. In Florida, the state’s allocation goes to 23 coastal counties for projects they choose. A second Interim Final Rule, also effective today, finalizes an additional allocation for 20 parishes in Louisiana. (Emphasis by LaTech Univ. Research)

More information can be found at <http://www.restorethegulf.gov/>.

For information on additional funding opportunities, go to: [http://research.latech.edu/resources/funding\\_opportunities](http://research.latech.edu/resources/funding_opportunities).